

STANDARD DEPARTURE
CHART - INSTRUMENT
(SID) - ICAO

TRANSITION ALTITUDE
10000 FT

ALMATY APPROACH 118.3
ALMATY RADAR 126.8
ALMATY TOWER 119.4
ALMATY ATIS (EN) 129.8
ALMATY ATIS (RU) 135.1

LAKEL 6E

ALMATY
RWY 05R/L

CHANGE: APP FREQ.

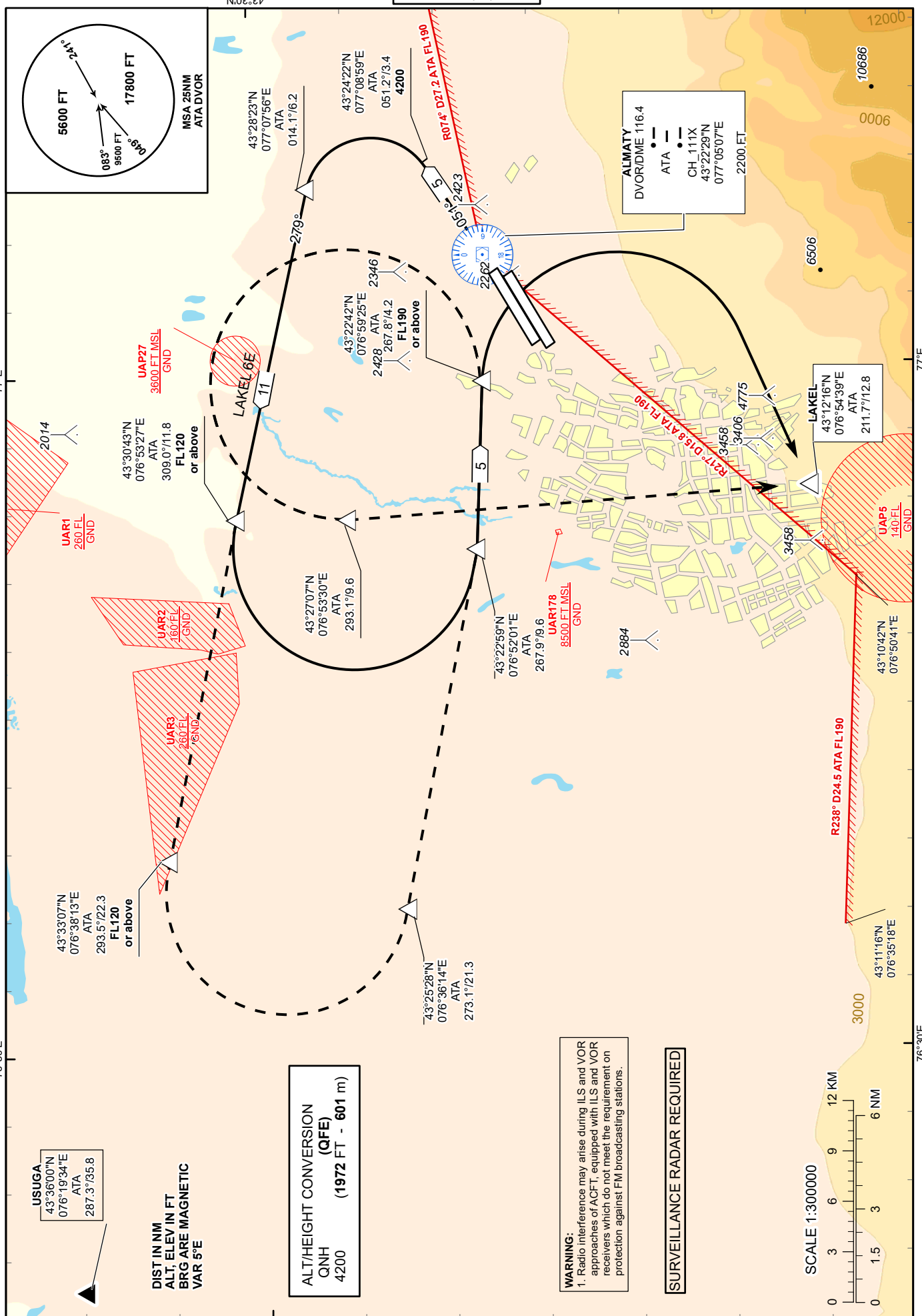
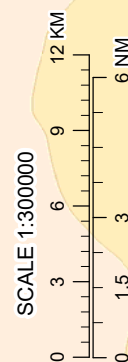
USUGA
43°36'00"N
076°19'34"E
ATA
287.3°/35.8

DIST IN NM
ALT, ELEV IN FT
BRG ARE MAGNETIC
VAR 5°E

ALT/HEIGHT CONVERSION
(QFE)
QNH
4200
(1972 FT - 601 m)

WARNING:
1. Radio interference may arise during ILS and VOR approaches of ACFT, equipped with ILS and VOR receivers which do not meet the requirement on protection against FM broadcasting stations.

SURVEILLANCE RADAR REQUIRED



STANDARD DEPARTURE ROUTES - INSTRUMENT (SID) ALMATY RWY 05R/L

LAKEL 6E

Climb on track 051° to 4200 FT, turn LEFT on track 279° to USUGA R287.3° D35.8NM ATA.
Climb to FL120 or above. Between 11.8 and 22.3 NM ATA, turn LEFT to ATA. Climb to FL190 or above. After reaching FL190 or above, turn RIGHT to LAKEL R211.7° D12.8NM ATA. If unable to reach FL190 at 4.2NM inbound ATA, make LEFT turn to LAKEL.